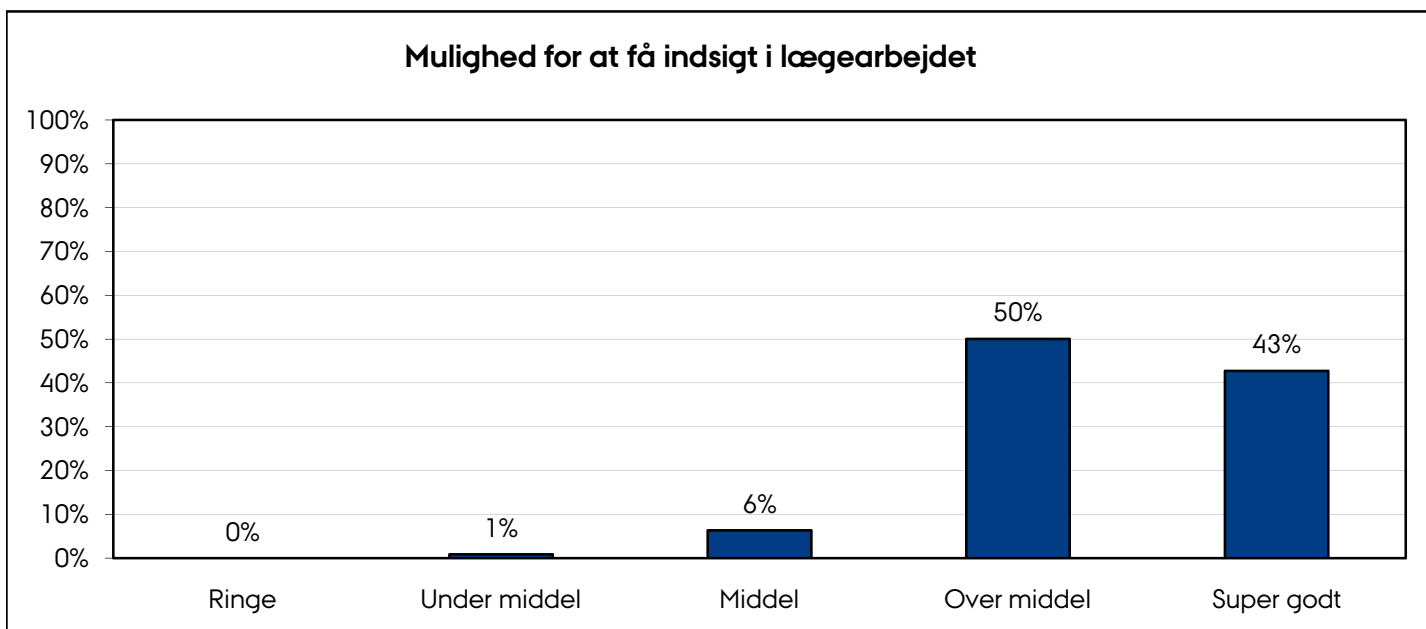
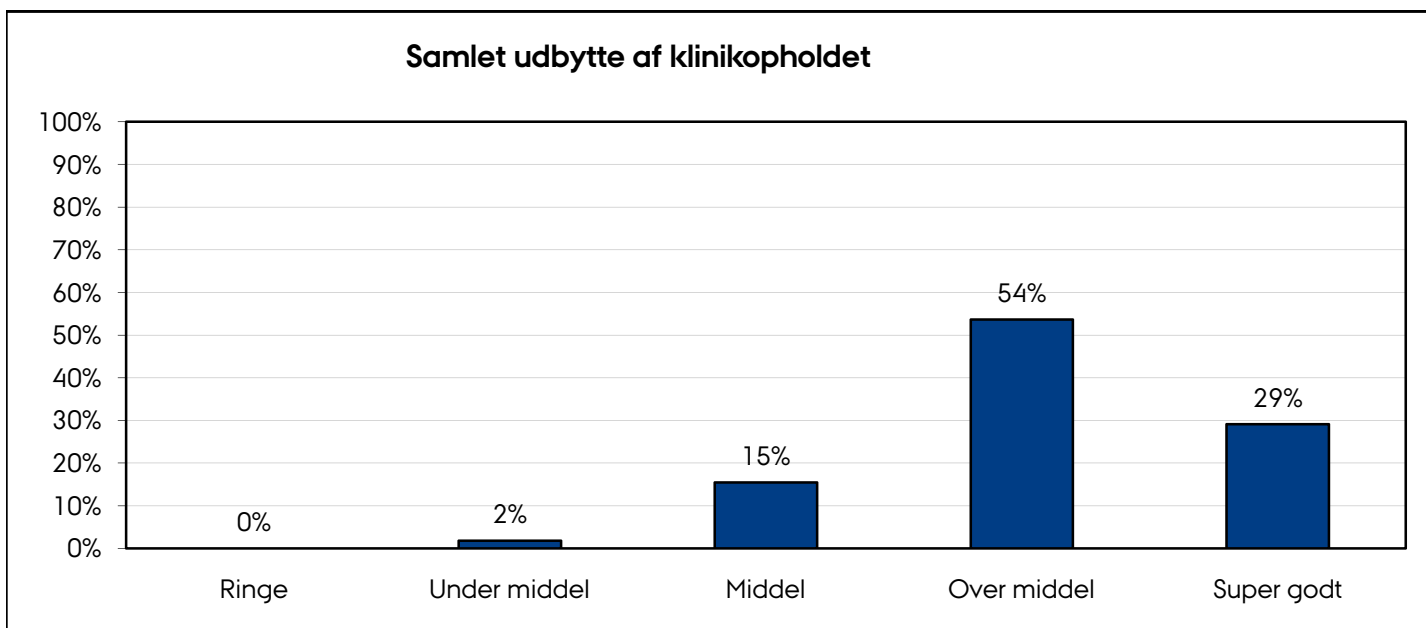


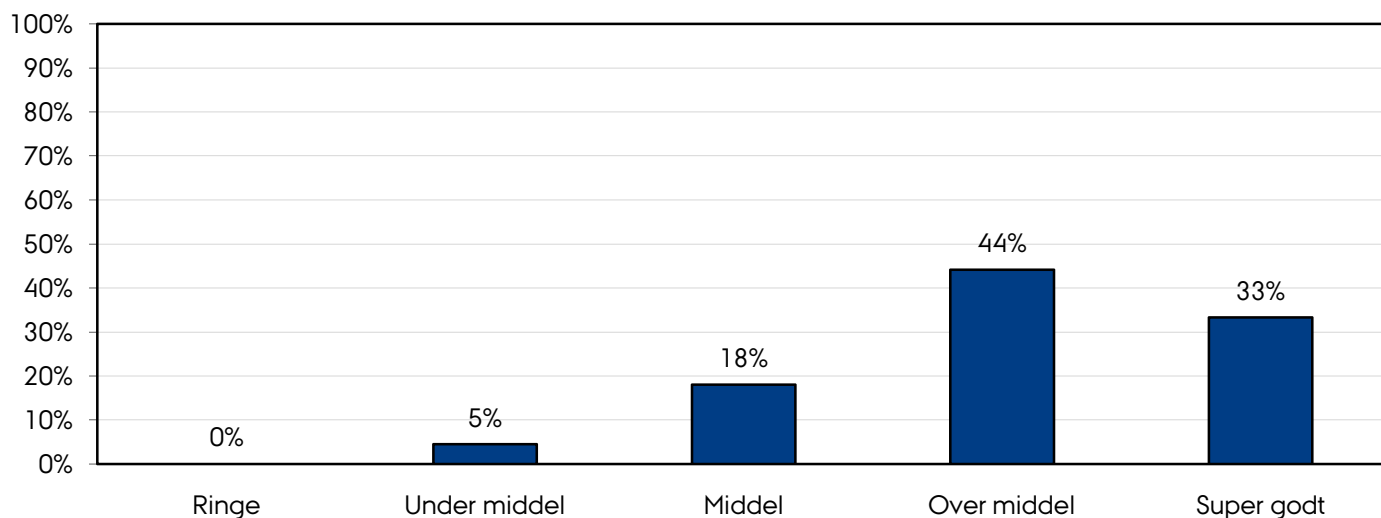
STUDIENÆVNETS EVALUERINGSKEMA

Tidlig klinik (2. semester)

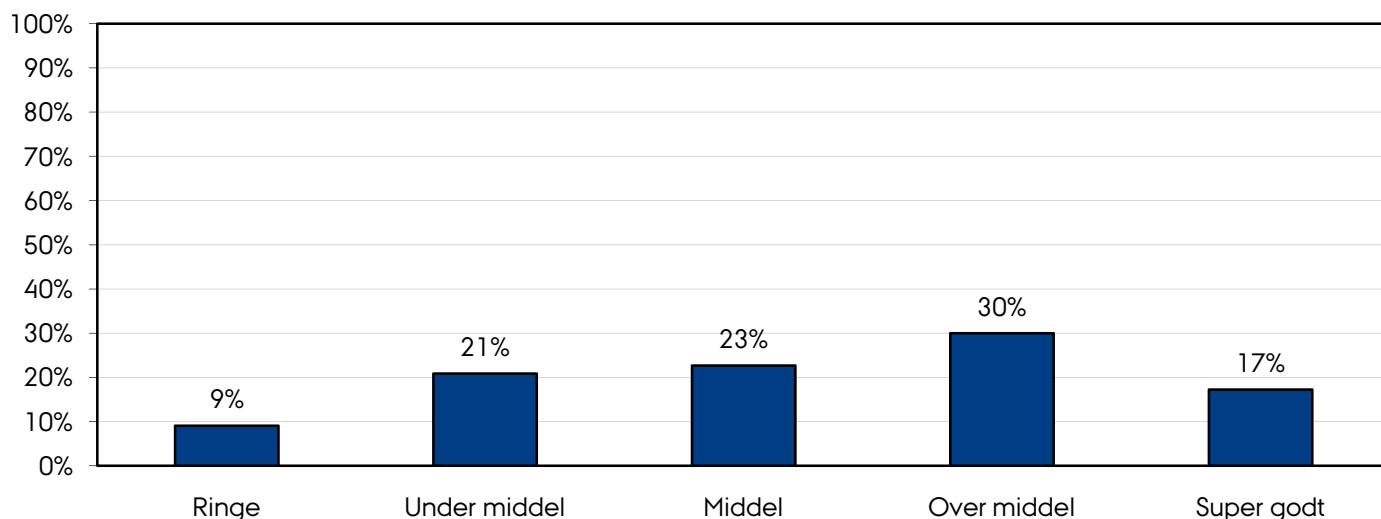
Forår 2012



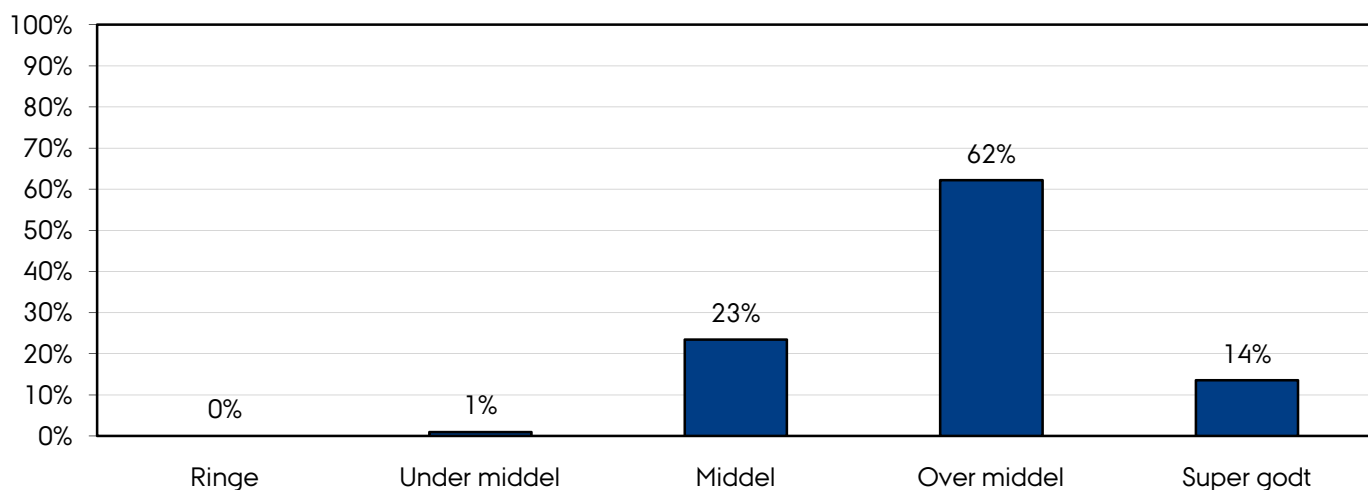
Mulighed for at se mange patienter



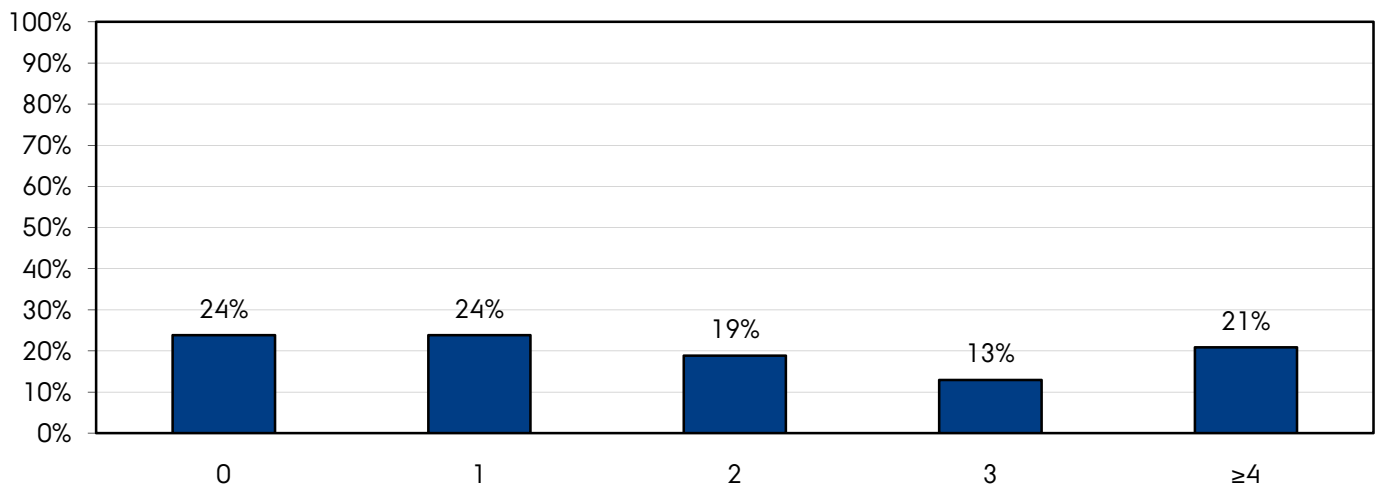
Teoretisk undervisning under klinikopholdet



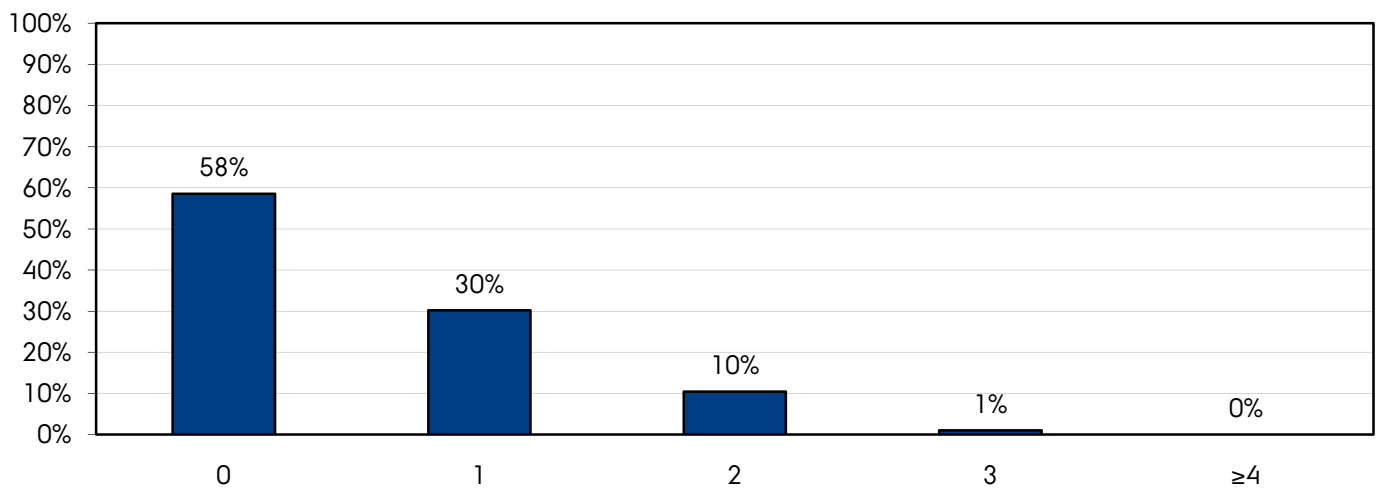
Egen indsats under klinikopholdet



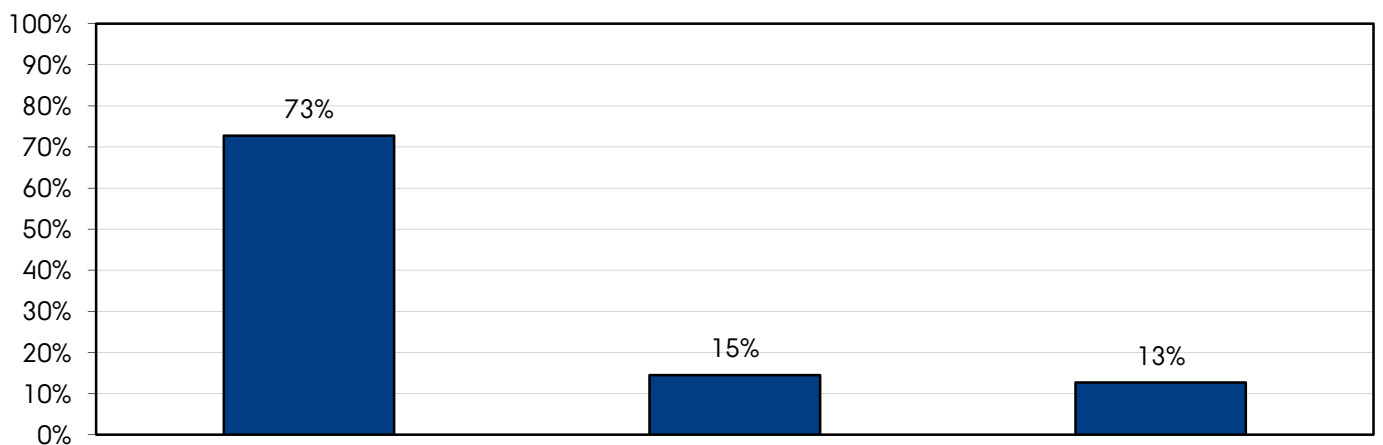
Hvor mange vagter har du deltager i på afdelingen?



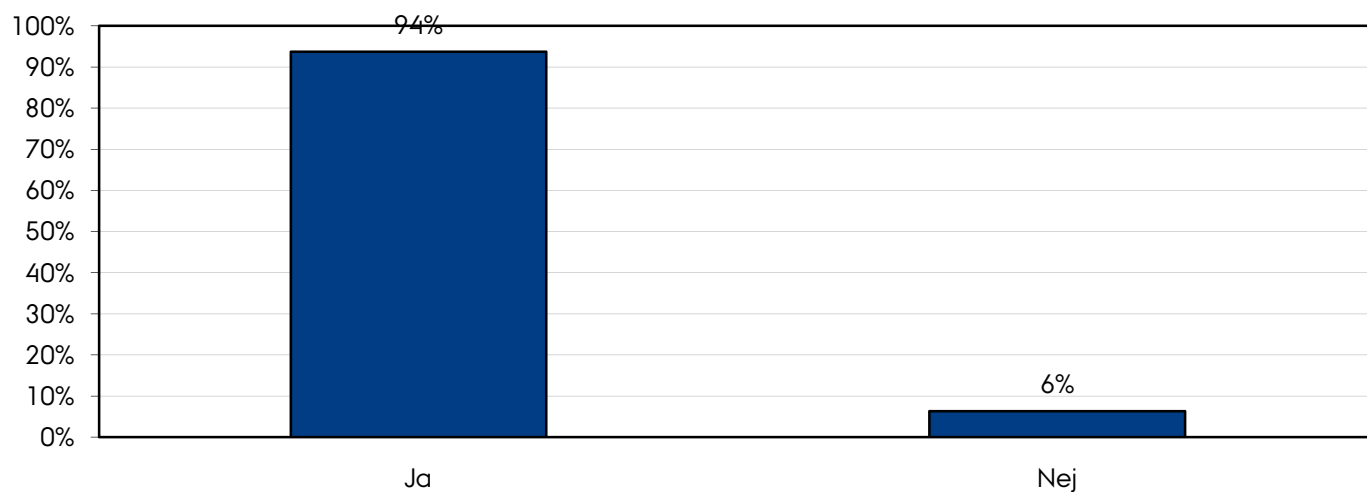
Hvor mange dage har du været fraværende fra afdelingen (bortset fra dagen efter nattevagt)



Klinikopholdets længde



Er antal studenter på afdelingen passende?



Hvis NEJ skyldes det

