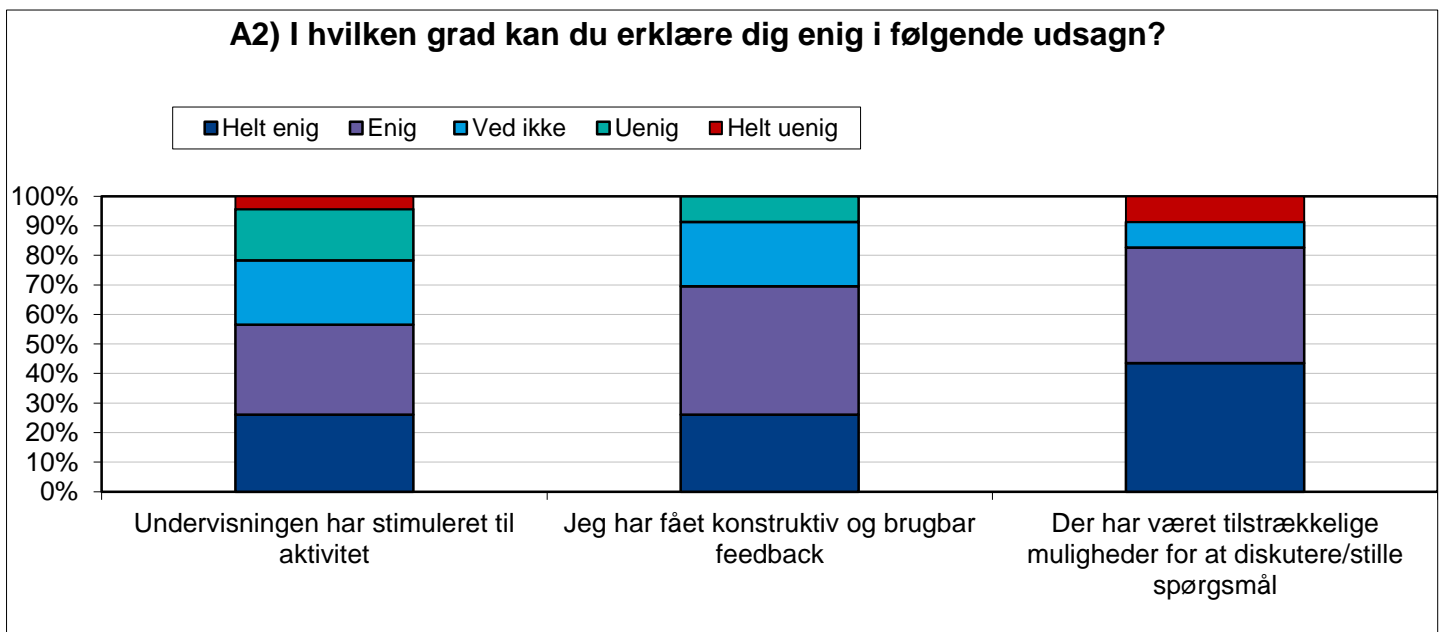
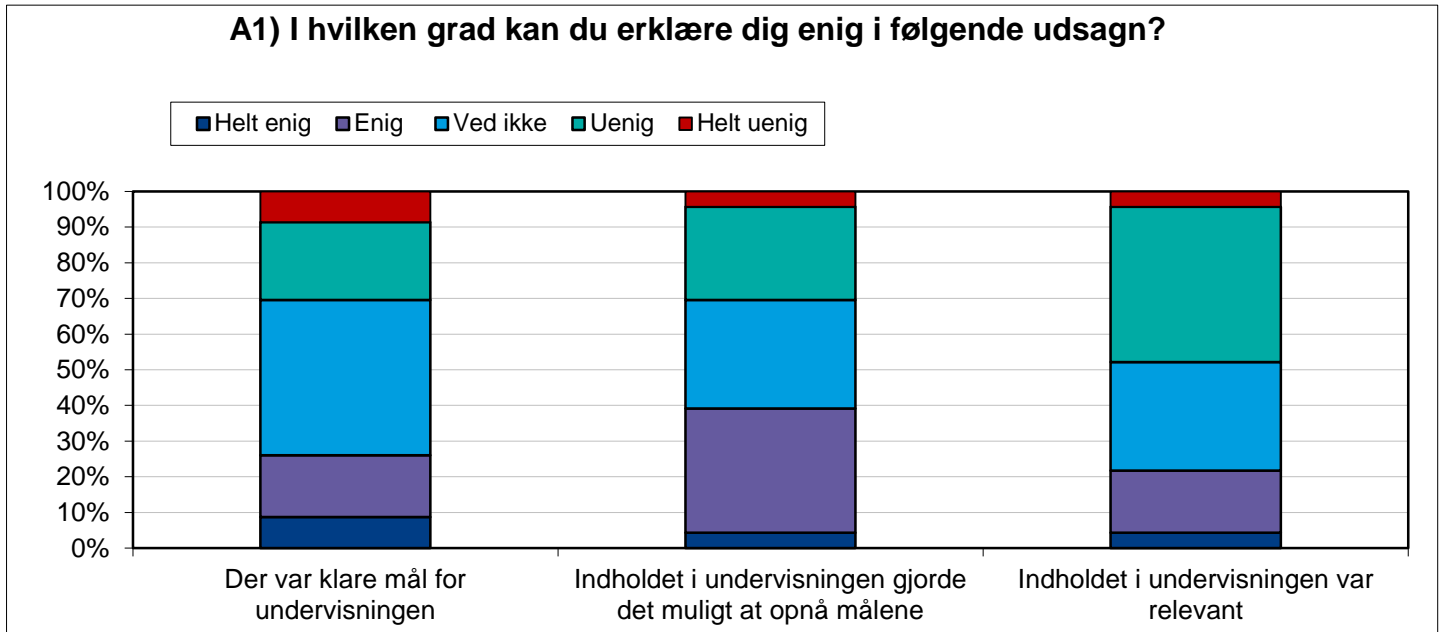


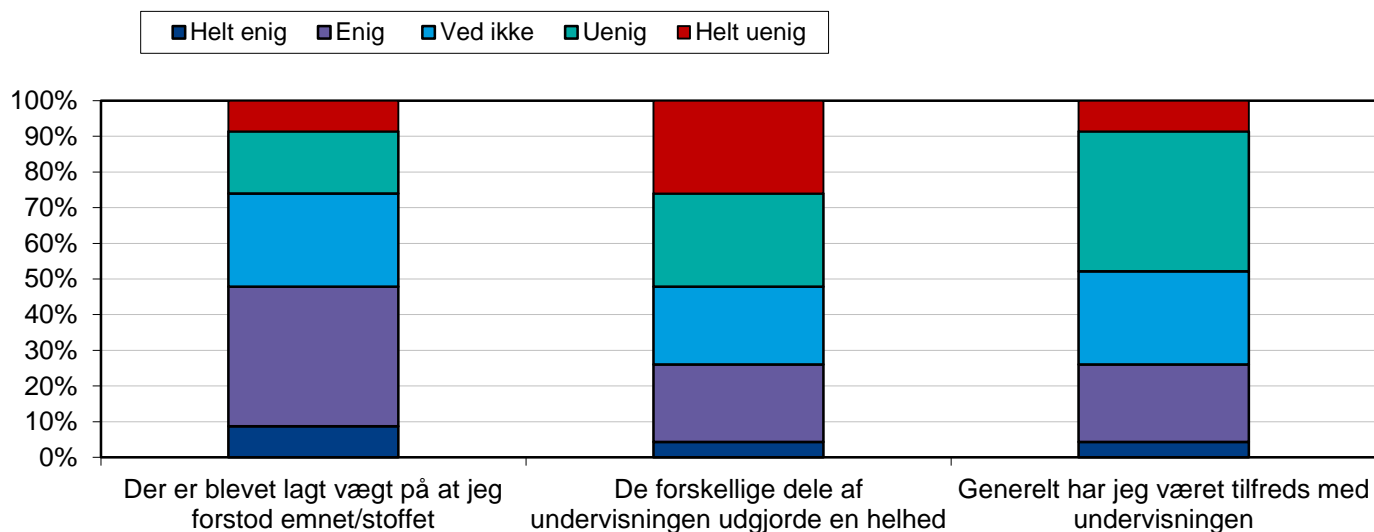
STUDIENÆVNETS EVALUERINGSKEMA

Medicinsk pædagogik

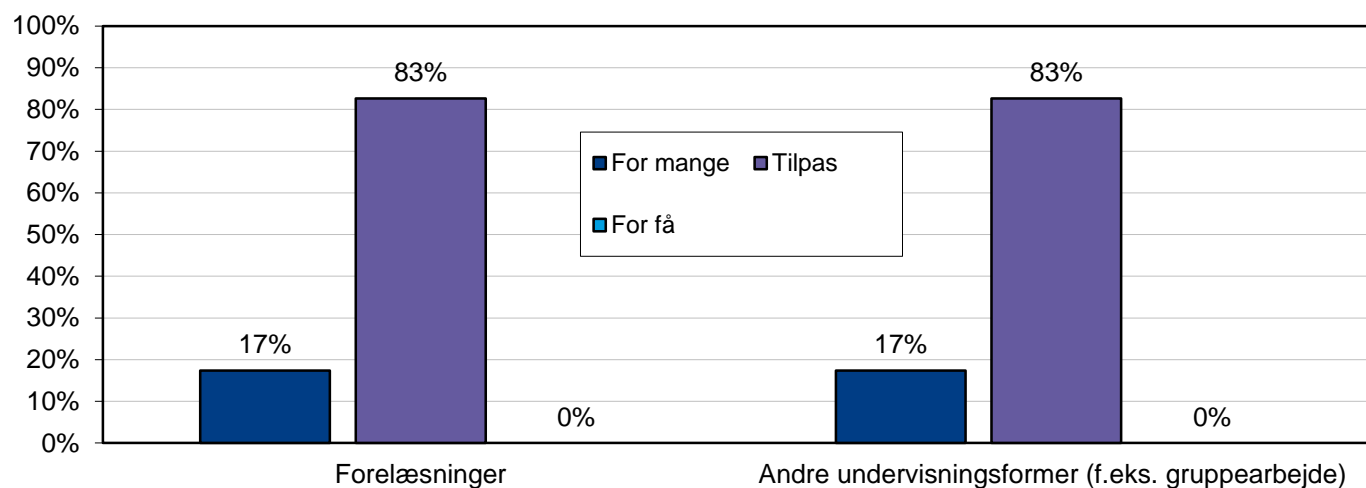
Efterår 2012:



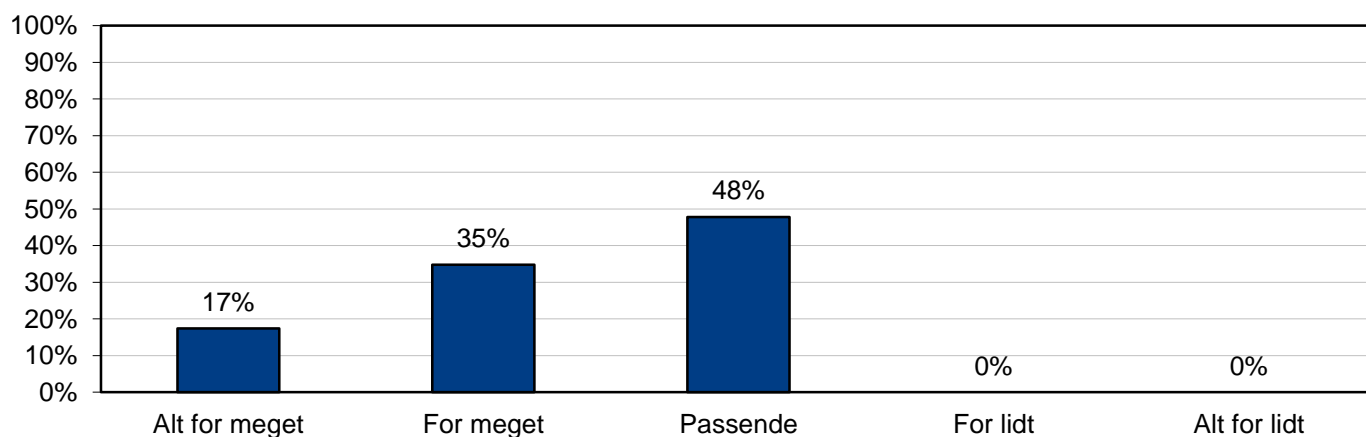
A3) I hvilken grad kan du erklære dig enig i følgende udsagn?



B) Hvad mener du om antallet af?

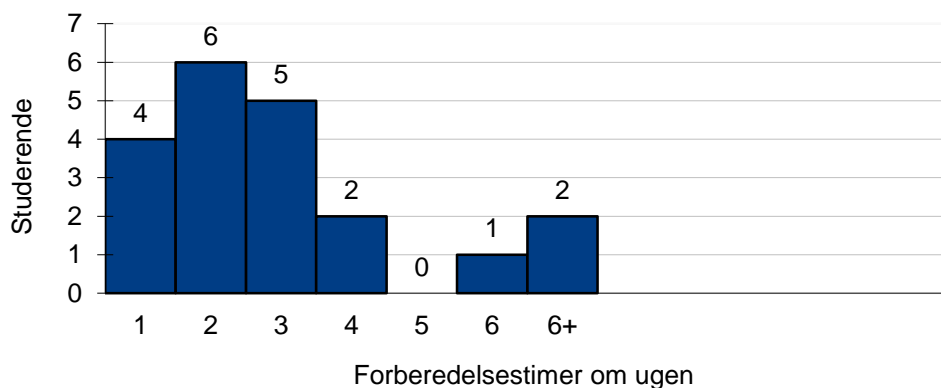


C) Hvorledes vurderer du tiden, du havde til rådighed, i forhold til pensums størrelse?

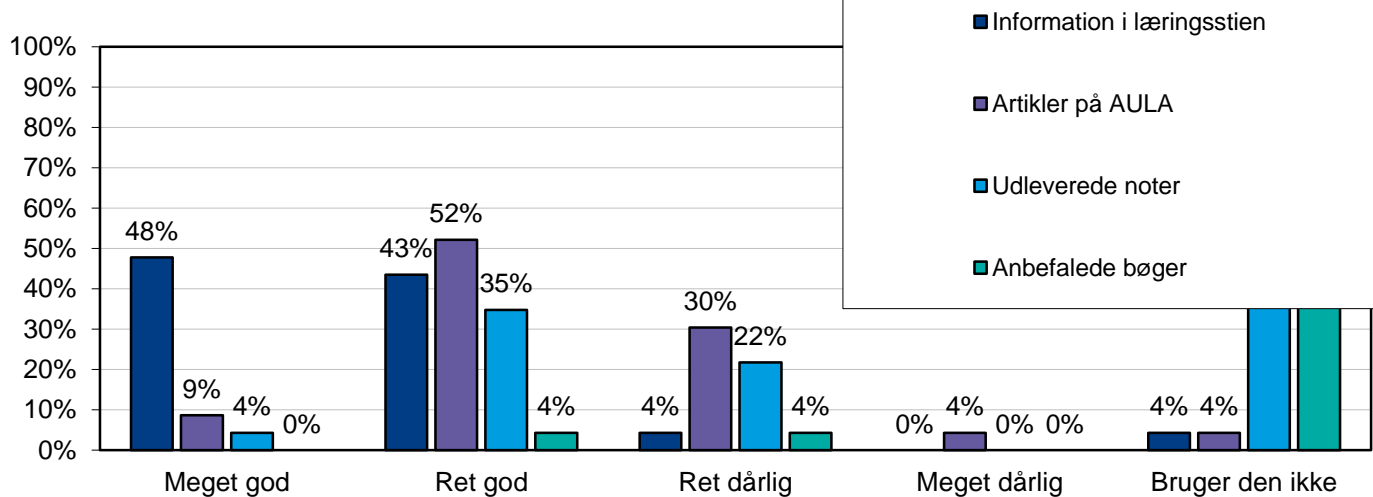


F) Hvor mange timer har du i gennemsnit anvendt om ugen til undervisningsforberedelse (selvstudium, læsegruppe etc.):

■ Middel: 3,03 timer pr uge



H) Hvordan vurderer du det anvendte undervisningsmateriale?



Vertical line on the left side of the page.

Vertical line on the left side of the page.

Vertical line segment 1

Vertical line segment 2

Vertical line segment 3

Vertical line on the left side of the page.